

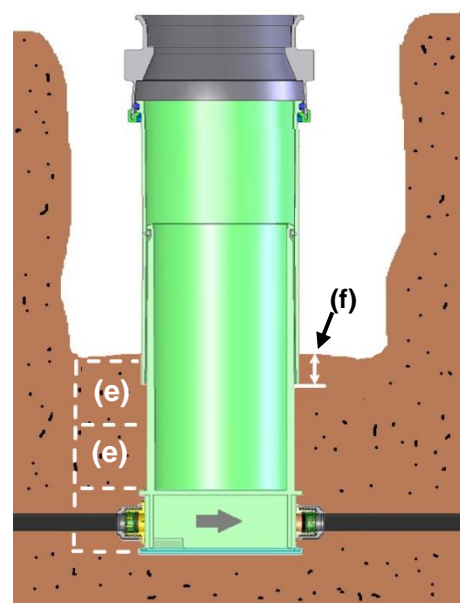
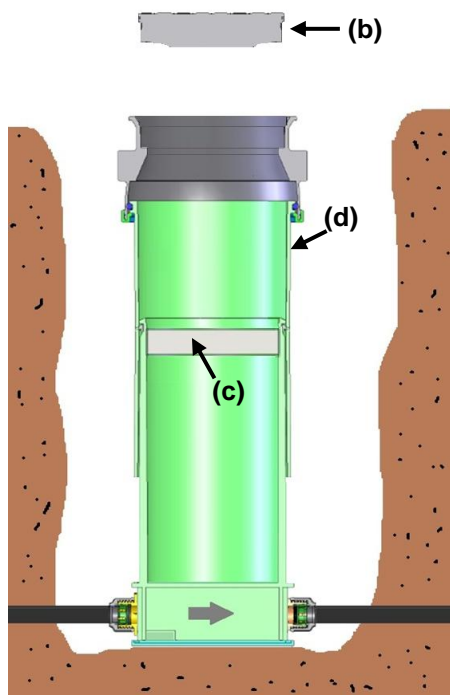
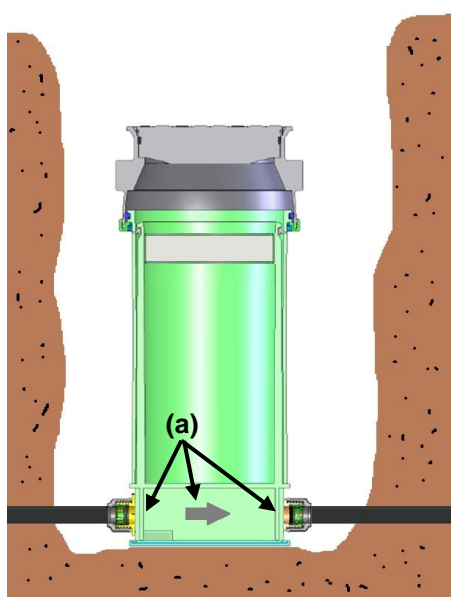


Boundary Water Meter Box

1. Prepare hole with level base.
2. Remove tape from connections.
3. Connect pipes to push-fit connections & hand-tighten.
4. Tighten further ½ turn with spanner.
5. Remove cover **(b)** & insulation **(c)** and store in a clean area.
6. Adjust height of Premier telescopic boundary box **(d)**.
7. Fill 100mm layers **(e)** of Pea gravel and compact each layer.
8. When Pea gravel is 50mm over the bottom of the outside guard sleeve **(f)**; the top level of the boundary box cover frame needs to be adjusted with the ground level.

Notes:

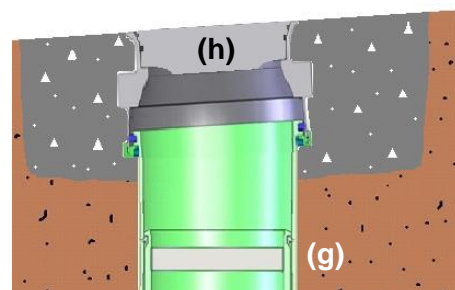
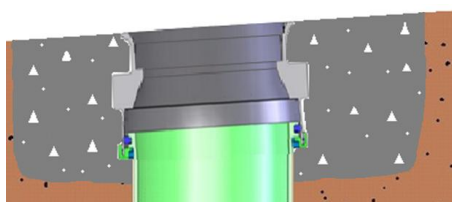
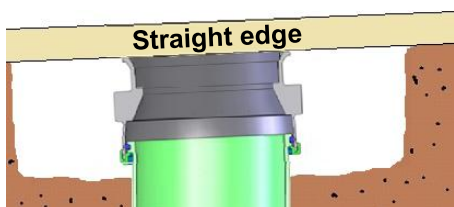
Direction of flow **(a)** is indicated by arrow and inlet & outlet markings.



9. Adjust the top of the cover frame using a straight edge with the ground level.
10. Continue to fill Pea gravel around the boundary box in 100mm layers and compact thoroughly.

11. For high load bearing requirements it is necessary, when Pea gravel is within 30mm of the cover frame, that a 30kN concrete pad 160mm in depth, up to the top of the cover frame.

12. Finally the insulated pad **(g)** and cover **(h)** is fitted.
13. It is necessary that the seal area where the cover fits into the cover frame is clear of debris.



Manufacturer ;



Premier Plastics Ltd., Shinagh, Bandon, Co. Cork, Ireland.

Tel: 023 8841028 email; info@premierplastics.ie www.premierplastics.ie